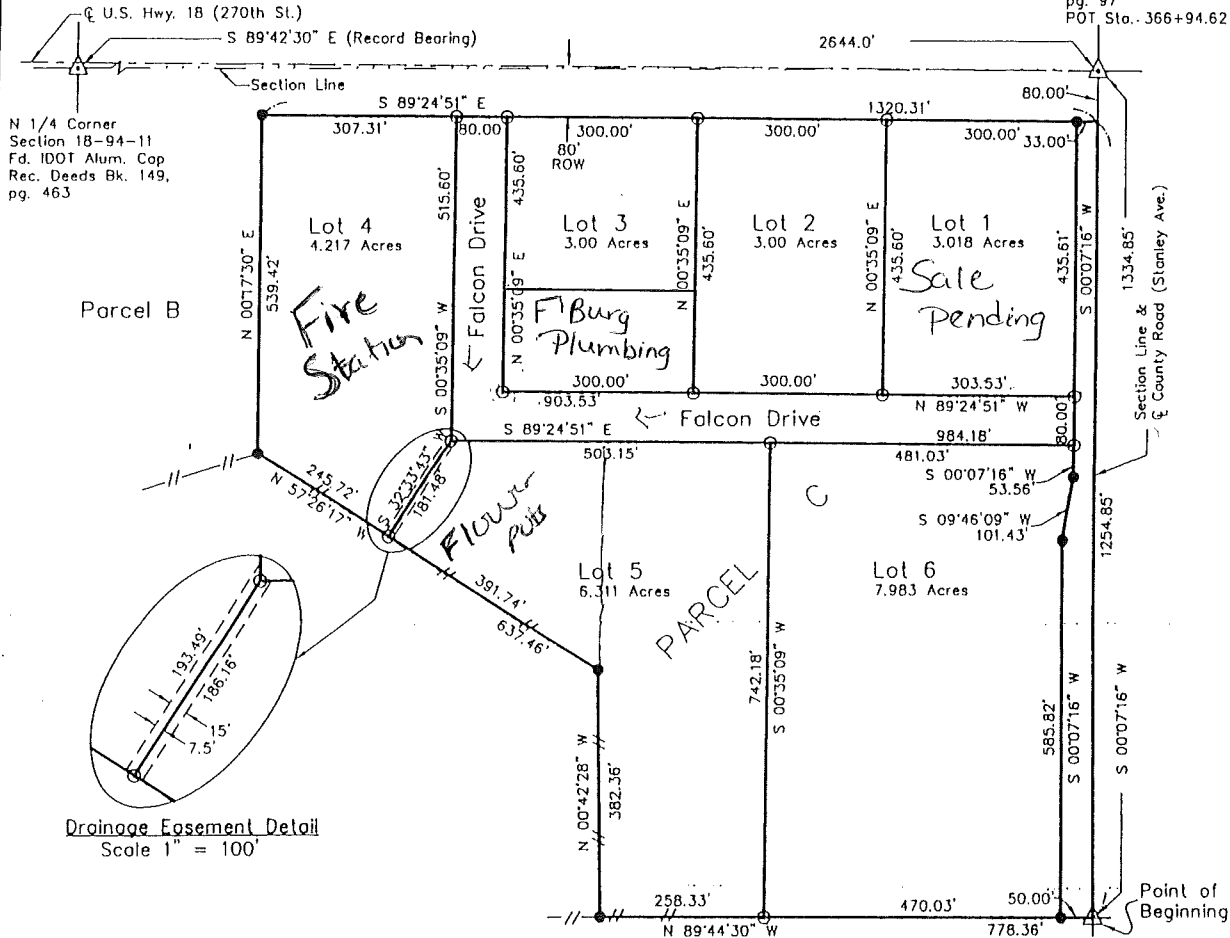


# Final Plot of Fredericksburg East Industrial Park

The Subdivision of Parcel C  
in the NE 1/4 - NE 1/4 of  
Section 18 - T94N - R11W  
in the City of Fredericksburg,  
Chickasaw County, Iowa

NE Corner  
Section 18-94-11  
Fd. IDOT Alum. Mon.  
Rec. Deeds Bk. 156,  
pg. 97  
POT Stn. 366+94.62

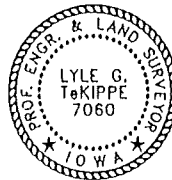


Drainage Easement Detail  
Scale 1" = 100'

OWNER/SUBDIVIDER  
Fredericksburg Community  
Development Corporation

Requested by:  
Ronald J. Rogers

Fredericksburg East Industrial Park  
Total Area: 31.335 Acres  
County Road (Stanley Ave.) ROW: 1.199 Acres  
Falcon Drive: 2.607 Acres

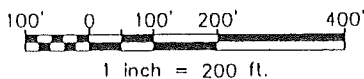


SE Corner  
NE 1/4-NE 1/4  
Section 18-94-11  
Fd. 1/2" Rebar  
w/Cap 12532  
Rec. Deeds Bk. 156,  
pg. 233

## LEGEND

- Land Corner.....  $\Delta$
- Existing Fence.....  $---//---$
- Fd. 1/2" Rebar w/Cap 12532.....  $\bullet$
- Set 1/2" Rebar w/Cap.....  $\odot$
- Survey Boundary.....  $---$

Survey was completed by July 3, 1996.



I hereby certify that this plat, map, survey or report  
was made by me or under my direct personal  
supervision and that I am a duly Registered Land  
Surveyor under the laws of the State of Iowa.

Signed:

Date:

Lyle G. TeKippe Iowa Reg. #7060  
My Registration Renewal Date is December 31, 1996.

## TeKIPPE ENGINEERING, P.C.

CONSULTING ENGINEERING  
& LAND SURVEYING

128 SOUTH VINE STREET, WEST UNION, IOWA  
PH. (319) 422-5131  
FAX (319) 422-5884

Project No. 95029.LS Field Bk. 46D Pg. 1